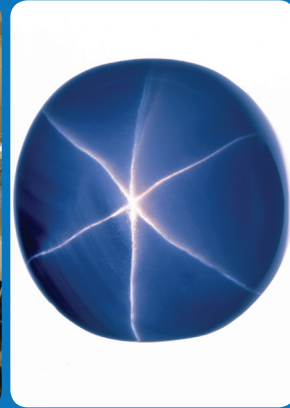




AMERICAN MUSEUM OF NATURAL HISTORY



Open Daily 10 am to 5:45 pm

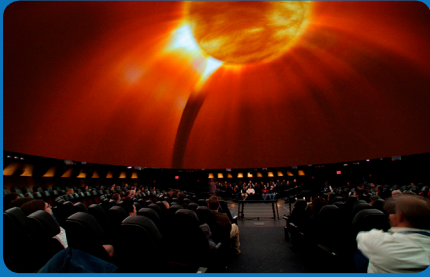
(Except Thanksgiving and Xmas Day)

Central Park West between 77th and 81st Street, New York City

AMNH.org/museum/tourplan/



Ongoing Favorites



**HAYDEN PLANETARIUM
SPACE SHOW THEATER**
Journey To The Stars

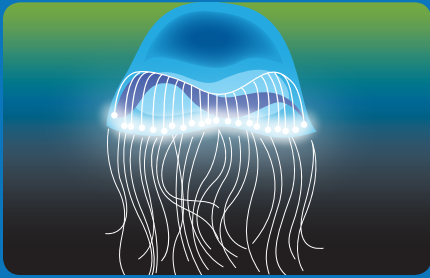


**THE BUTTERFLY CONSERVATORY
TROPICAL BUTTERFLIES:
ALIVE IN WINTER**
October 6, 2012–May 28, 2013



IMAX THEATER
Flying Monsters
Through January 4, 2013

Special Exhibitions



**CREATURES OF LIGHT:
NATURE'S BIOLUMINESCENCE**
Through January 6, 2013



SPIDERS ALIVE!
Through December 2, 2012



**OUR GLOBAL KITCHEN:
FOOD, NATURE, CULTURE**
November 17, 2012–August 11, 2013

RESERVATIONS

CALL: 212-313-7011

EMAIL: groups@amnh.org

BOOK NOW: www.amnh.org/museum/tourplan/

Tour Operator rates available

Group Prices

TICKET TYPE	INCLUDES	TYPE OF VISITOR	GENERAL ADMISSION	GROUP (min. 20 people)
MUSEUM ONLY	Admission to the Museum and Rose Center for Earth and Space	ADULT	\$ 19.00	\$ 15.50
		SENIOR/STUDENT (<i>college</i>)	\$ 14.50	\$ 12.00
		CHILD (2–12)	\$ 10.50	\$ 9.00
		SCHOOL GROUPS	NA	\$ 10.50
MUSEUM + 1	Admission to the Museum, Rose Center, and choice of Space Show, IMAX, or Special Exhibition	ADULT	\$ 25.00	\$ 23.00
		SENIOR/STUDENT (<i>college</i>)	\$ 19.00	\$ 17.50
		CHILD (2–12)	\$ 14.50	\$ 13.50
		SCHOOL GROUPS	NA	\$ 14.00
SUPER SAVER <i>See everything and save!</i>	Admission to the Museum, Rose Center, IMAX, Space Show, and Special Exhibitions	ADULT	\$ 33.00	\$ 27.50
		SENIOR/STUDENT (<i>college</i>)	\$ 25.50	\$ 23.50
		CHILD (2–12)	\$ 20.50	\$ 16.50
		SCHOOL GROUPS	NA	\$ 18.00

Valid through December 31, 2013. Prices subject to change.